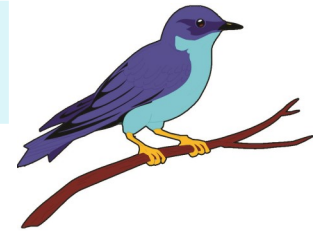


What Do I Bring?



Bluebird parents, please supply:

- 2 complete changes of clothes
- 1 thin blanket
- Comfort items such as stuffed animal or blankie

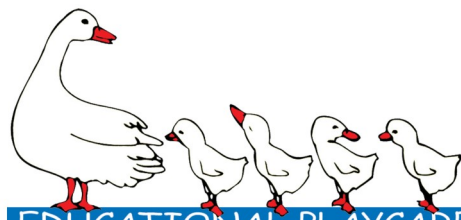
In the Summer:

- Bathing Suit
- Towel
- Closed-toe water shoes
- 1 labeled water bottle to take outside
- 1 labeled bottle of non-spray sunscreen

In the Winter:

- Winter (snow) coat
- Snow pants
- Winter boots
- Hat
- Mittens or gloves

**PLEASE LABEL ALL OF THE ITEMS THAT YOU
BRING IN WITH YOUR CHILD'S NAME.**



EDUCATIONAL PLAYCARE
Childcare and Schools for Young Children